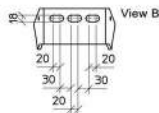
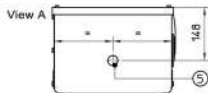
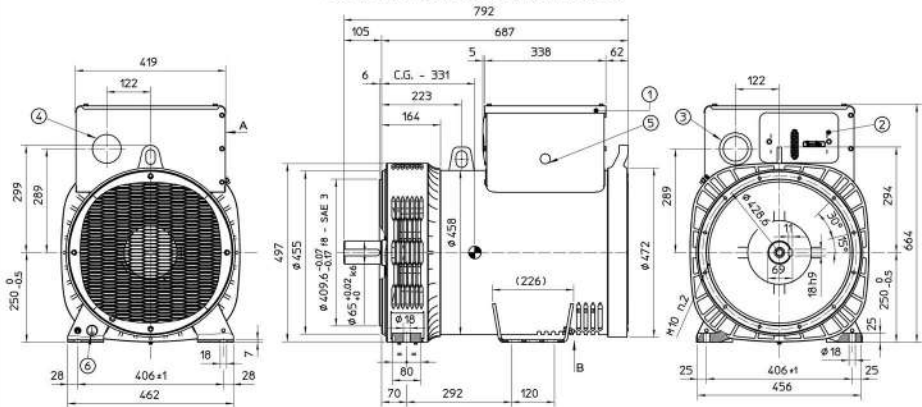




## TWO BEARING DIMENSIONS



- 1) REMOVABLE COVER FOR ACCESS TO MAIN TERMINALS  
 2) REMOVABLE PANEL FOR ACCESS TO AVR  
 3) FRONTAL STANDARD HOLE FOR CABLE ENTRY  $\phi 80$ mm  
 4) PRE-CUT ON MAIN PANEL FOR CABLE ENTRY  $\phi 80$ mm  
 5) PRE-CUT ON LATERAL PANEL FOR CABLE ENTRY  $\phi 28$ mm  
 6) SCREW M6 FOR GROUNDING